

Campus Resources

for accommodations or modifications and other support:

Disability Services office at Pine Technical College

Phone 320-629-5174

http://www.ptcfaculty.org/~nweb/student_services/disability.html

The Disability Services Office at PTC is dedicated to ensuring that all students are given the opportunity to succeed. Our staff will work individually with you and determine the accommodations that may be necessary for your specific situation.

Counseling Services at Pine Technical College

Phone 320-629-5135

http://www.ptcfaculty.org/~nweb/student_services/counseling.html

Whether you need assistance in transfer of credits or are seeking additional assistance in course work, our counselor can give you the needed guidance.

Additional Resources:

Brain Injury Association of MN

<http://www.braininjury.org>

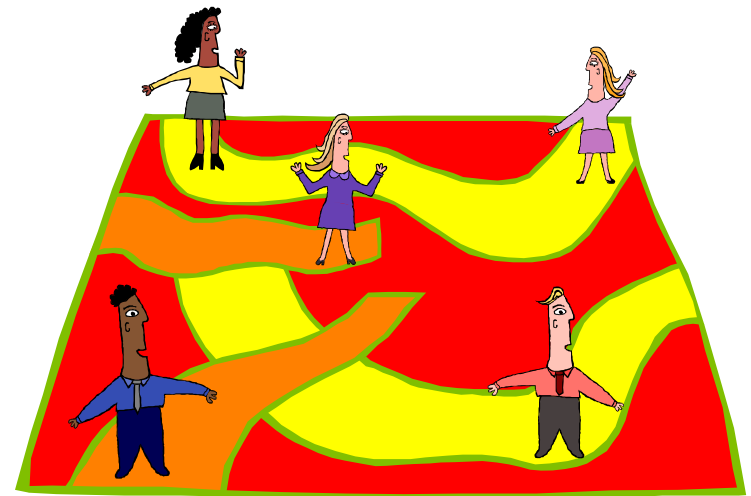
Pine Technical College

900 4th Street SE

Pine city, MN 55063

1-800-521-7463

Success Strategies for Students Traumatic Brain Injuries (TBI)



Pine Technical College

Student Learning Strategies

- ✓ Work in pairs, teams or small groups in order to learn from others and participate socially.
- ✓ Have a buddy or mentor to contact for reminders and support.
- ✓ Break down large assignments into more manageable segments and work on small parts at one time.
- ✓ Use a planner to stay organized. Plot out due dates for assignments and tests in the planner.
- ✓ Try a think-aloud technique, cue cards and verbal reminders when studying and doing assignments.
- ✓ Ask questions and set up tutoring as needed.

Student Responsibilities

- ✓ Notify the Disability Coordinator early that you have a disability that may affect your learning and success in college.
- ✓ Provide documentation of the disability to the Disability office.
- ✓ Make timely arrangements for accommodations by meeting with the Disability Coordinator prior to each semester.
- ✓ Follow through with accommodations or modifications consistently.